

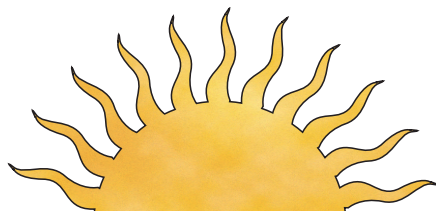
# SUTURE NEEDLE CROSS REFERENCE

VISIONARY MEDICAL SUPPLIES CODES					COMPARIBLE NEEDLE CODES							
Tip	Curve	Length (mm)	Diameter (mm)	VMS Code	Alcon	Ethicon	FSSB	Mani	Peters	SharpPoint	Syneture™	
Spatula	Straight	16	0.15	ST-000-6	.	STC-6	.	VS16-14	16 SP150	.	.	
	1/4 (90°)	7.6	0.20	ST-90-8	.	S-29, S-24	.	.	.	VSP8	SS-24, SS-29, SS-14	
		8.0	0.23	ST-90-9	.	S-4, S-14, S-29, S-24, RD-1	.	ZK08-33	8,0 SP240	VSP8, DO5, VCL8	SS-24, SS-29, SS-14	
		16.0	0.15	ST-90-6	.	.	.	.	.	.	.	
	1/2 (160°)	5.6	0.15	ST-160-6	CU-5, AU-5	TG160-4, TG160-6, CS160-6, CS160-8	HLZ-5,6-150	.	.	.	HSL5, HSL6, HGL5	SE-160-6
		8.0	0.23	ST-160-9	.	S-2, S-22	.	ZH08-20	.	.	.	.
	3/8 (140°)	6.0	0.15	ST-140-6	CU-1, AU-1	TG140-6*, CS140-6*	DLZ-6,2-150	ZE06-14	6,0 SP150	DSL6, DGL6, DGL7*	SE-140-6	
		6.0	0.20	ST-140-8	.	TG140-8*	.	ZE06-18	.	DSL7*, DGL7*	SE-140-8	
6.5		0.23	ST-140-9	C-3, A-3	TG140-8, CS140-6, CS140-8	DLZ-6,4-200	ZE065-20	6,4 SP200	DSL7, DGL7	.		
	8.0	0.29	ST-140-11	.	.	.	ZE08-28	8,0 SP280	.	.		
Taper Point	3/8 (140°)	6.0	0.20	TP-140-8*	.	BV130-5*	.	.	.	DRM6	MV-135-5	
		6.0	0.23	TP-140-9	.	BV130-5*	.	.	.	DRM6	MV-135-5	
	1/4 (90°)	13.0	0.15	TP-90-6*	.	.	.	.	.	.	.	
Cutting	3/8 (140°)	6.0	0.43	CT-135-17	.	.	.	.	.	.	.	
Reverse Cutting	3/8 (140°)	13.1	0.38	RC-130-15	BO-2	C-2, C-3, G-3, M-2, P-3	.	RE13-33	13,0 RC330	.	HE-3	

All needles are within 0.15mm length, unless otherwise noted.

\*Needle available only on special order products

\* Comparable needle is 0.5mm longer.



**VISIONARY MEDICAL SUPPLIES, INC.**  
SUTURES, IOLS, OPHTHALMIC SOLUTIONS, AND MORE

## CONTACT INFORMATION

6441 Enterprise Lane, Madison, WI 53719, USA

www.visionarymedicalsupplies.com

TEL: 608-270-3880

FAX: 608-270-3882



CE Mark &  
FDA 510(k)